

\$1,095,000

LOT 113

# 5 COTTONWOOD LANE

AVAILABLE FROM FEBRUARY 2025



[www.woodridgehomes.nz](http://www.woodridgehomes.nz)

Steve Platt

M: 0274 463 906

E: [steve.platt@raywhite.com](mailto:steve.platt@raywhite.com)

**Ray White**

Licensed under REAA Act 2008

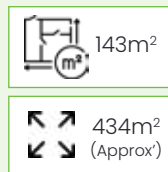


**FEATURES**



- Three bedrooms
- Master bedroom with ensuite
- Open kitchen – dining & living
- Deck off living
- Garaging with internal access
- Patio / courtyard for outdoor living

**DIMENSIONS & TOPOGRAPHY**



- Ground floor area 37m<sup>2</sup>
- First floor area 106m<sup>2</sup>
- Total floor area 143m<sup>2</sup>
- Section size 434m<sup>2</sup> (approx)
- Flat rear section with timber paling side & rear fences

Deposits held securely in Lawyers Trust Account



**CREATIVE DESIGN**  
**CONVENIENT LOCATION**  
**QUALITY CONSTRUCTION**

Licensed Building Practitioners.  
 As we have been building quality homes for more than 40 years, you have our security and experience on your side.

Steve Platt  
 M: 0274 463 906  
 E: steve.platt@raywhite.com

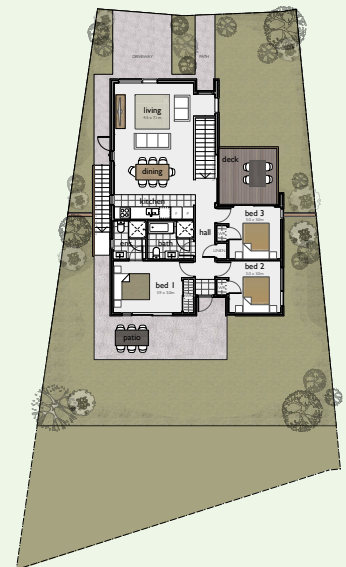
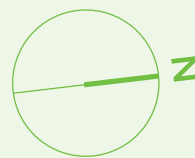
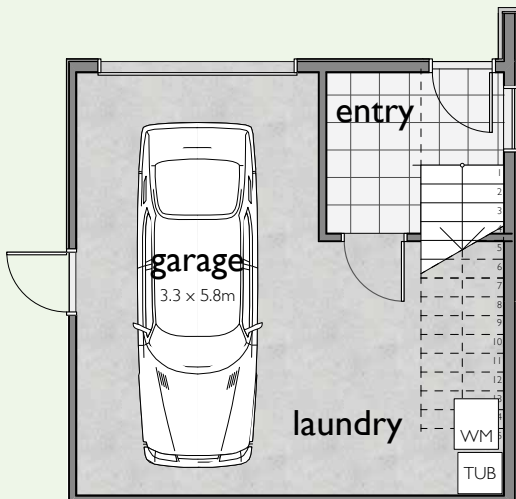




UPPER LEVEL

LOWER LEVEL

SITE PLAN



**CREATIVE DESIGN**  
**CONVENIENT LOCATION**  
**QUALITY CONSTRUCTION**

Licensed Building Practitioners.  
As we have been building quality homes for more than 40 years, you have our security and experience on your side.

**Steve Platt**  
M: 0274 463 906  
E: steve.platt@raywhite.com



**SITE WORKS**

**Foundation**

Specific designed and engineered Raft slab system .

**Services**

All underground services for power, gas, water, sewer & stormwater, connected to mains. Approved chorus ducting for phone & internet connection.

**Driveway & Patios**

Exposed aggregate.

**Lawn**

Sprayed hydro mulched OR Seeded lawn to all flat area's (All maintenance by owner from possession).

**Clothesline**

Folding Frame.

**Fencing**

As viewed - timber paling side & rear fences .

**EXTERIOR**

**Roofing**

Profiled Colorsteel roofing.

**Spouting & Downpipes**

Colorsteel spouting and downpipes.

**Exterior Clad**

Resene Integra Lightweight Concrete Façade & Axon panel.

**Window Joinery**

First New Metro Thermal Heart includes Solux-E Glass.

**Garage Door**

Coloured Sectional Door with auto-opener & remote control.

**INTERIOR**

**Insulation Rating**

Pink Batts - R2.8 & R4.3 wall & R5.0 ceiling (Note - this home meets current improved insulation standards).

**Linings**

Plaster Board throughout with Aquaboard to bathrooms. Villaboard behind tiled shower walls. All Plaster board areas plastered to level 4 and painted to a high quality finish.

**Stair Handrail**

Colour matched aluminum grab rail.

**Trim**

Skirting and doors finished with 60mm bevelled architrave. Square stop ceiling trim.

**Doors**

V Groove Flush hung doors with lever style hardware. Privacy locks to bathrooms & deadlock to house garage door.

**Shelving Systems**

Custom cabinetry & shelving - 18mm MDF with hang rails (as viewed).

**Floor Coverings**

Carpet to all living & bedroom area's. Ceramic tiling to entry, kitchen & bathroom area's. Garage Carpet & vinyl planking to laundry.

**Laundry**

Custom cabinetry with single s/ steel bowl, faucet tap & washing machine connections. High pressure Laminate bench top.



**CREATIVE DESIGN  
CONVENIENT LOCATION  
QUALITY CONSTRUCTION**

Licensed Building Practitioners.  
As we have been building quality homes for more than 40 years, you have our security and experience on your side.

**Steve Platt**  
M: 0274 463 906  
E: steve.platt@raywhite.com



**KITCHEN**

MasterCraft Kitchen by Your Kitchen Ltd - with 10 year transferable Mastercraft Guarantee. Soft close drawers & hinges / Moisture resistant low formaldehyde MDF substrate / 30mm Engineered Stone Bench tops / Cabinetry to 2400mm high / pantry contains Space Tower Drawer System / Wall units with F & P HP90ICSX4 powerpak (extractor) over gas hob.

**Appliances**

Bosch - s/steel under bench oven, gas hob & dishwasher. Models: BSH SERIES 4 60CM PYRO B/I OVEN SKU: HBA574BS0A, BSH 75CM GAS C/TOP SKU:PCS7A5B90A, BSH SERIES 4 S/S 14PL B/UNDER D/WASHER SKU:SMU4HVS01A. Water feed Connection in fridge space.

**Tapware**

Paini Nove Sink Mixer. Glass Splashback.

**Floor Coverings**

Ceramic tiles with electric undertile heating.

**BATHROOMS**

**Showers**

Athena SlateForma shower trays with ceramic tiled walls & Cardo door system.

**Bath**

Varo 1520 freestanding.

**Vanities**

Nikau 750 Double drawer to main & ensuite.

**Toilets**

Levivi Marbella dual flush back to wall toilet suite.

**Tapware**

Paini Nove range including basin and shower mixers, bath/shower diverter. Slide shower systems.

**Mirrors**

Frameless to main & ensuite vanities.

**Floor Coverings**

Ceramic tiles.

**Extraction Fans**

150mm inline extraction fans.

**HEATING & HOT WATER SYSTEM**

**Radiator System**

Baxi Gas Boiler & Delonghi hot water radiators to living areas, hall and bedrooms.

**Hot Water System**

Rinnai Infinity 26 litre gas continuous hot water system with two controllers

**ELECTRICAL - AS INSTALLED**

Flush mounted distribution switchboard & meter cabinet complete with RCD'S and circuit breakers in garage. Fibre Ready Communications board with central connection for all data & tv. Single & Double sockets, including 3 with USB charger outlets. Recessed LED lights with switches including 3 x two way switching to main living. Batten holders with switches to bedrooms. Surface mounted LED strip lights to garage. Exterior LED bulkhead lights & twin sensor lights. Telephone/data and TV outlets. 600mm heated towel rails to main bath & ensuite.

**Security System**

Arrowhead Elite ESL Series Security system, 3 built in smoke detectors, panic switch to master bed. Operates over fibre network & can be controlled via a smartphone.



CREATIVE DESIGN  
CONVENIENT LOCATION  
QUALITY CONSTRUCTION

Licensed Building Practitioners. As we have been building quality homes for more than 40 years, you have our security and experience on your side.

Steve Platt  
M: 0274 463 906  
E: steve.platt@raywhite.com





[www.woodridgehomes.nz](http://www.woodridgehomes.nz)

**CREATIVE DESIGN**  
**CONVENIENT LOCATION**  
**QUALITY CONSTRUCTION**

Licensed Building Practitioners.  
 As we have been building quality homes for more than 40 years, you have our security and experience on your side.

**Steve Platt**  
 M: 0274 463 906  
 E: [steve.platt@raywhite.com](mailto:steve.platt@raywhite.com)

**Ray White**

Licensed under REAA Act 2008