

LOT 521 | 54 TEA TREE LANE

**SOLD**



#### FEATURES

- Three bedrooms plus study nook
- Master bedroom with large wardrobe & ensuite
- Large open kitchen - dining
- Semi separate lounge
- Garaging with internal access
- Large patio/courtyard for outdoor living (private)
- Flat section on two levels with timber fences on both sides and rear boundary

*Refer to the latest Woodridge Developments new homes specifications for details*

#### FOR MORE INFO CONTACT

**0800 WOODRIDGE**

Leanne Wright  
mbl 021 72 82 85  
43 Woodridge Drive,  
Woodridge  
PO Box 26 017,  
Newlands,  
Wellington 6442  
[www.woodridge.co.nz](http://www.woodridge.co.nz)



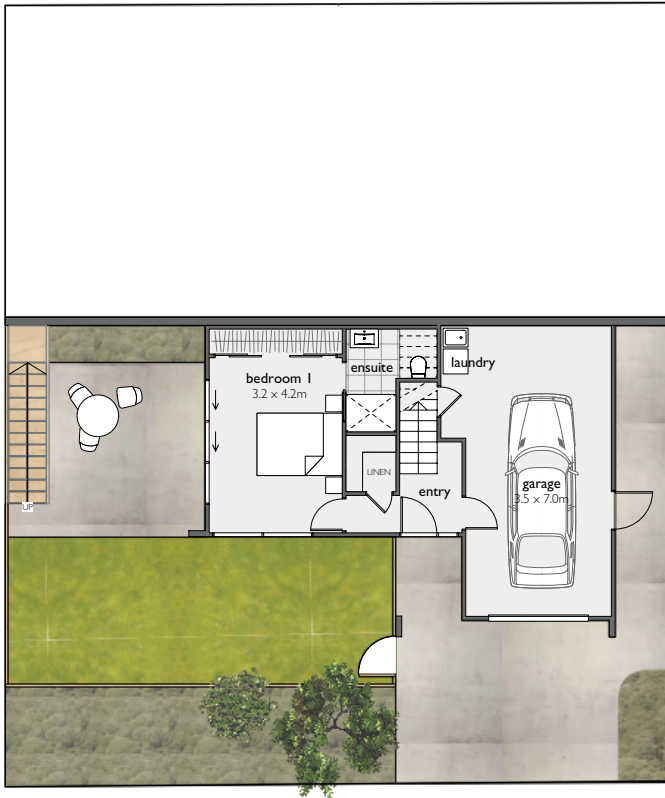
**W O O D R I D G E**  
**D E V E L O P M E N T S**

*above all*

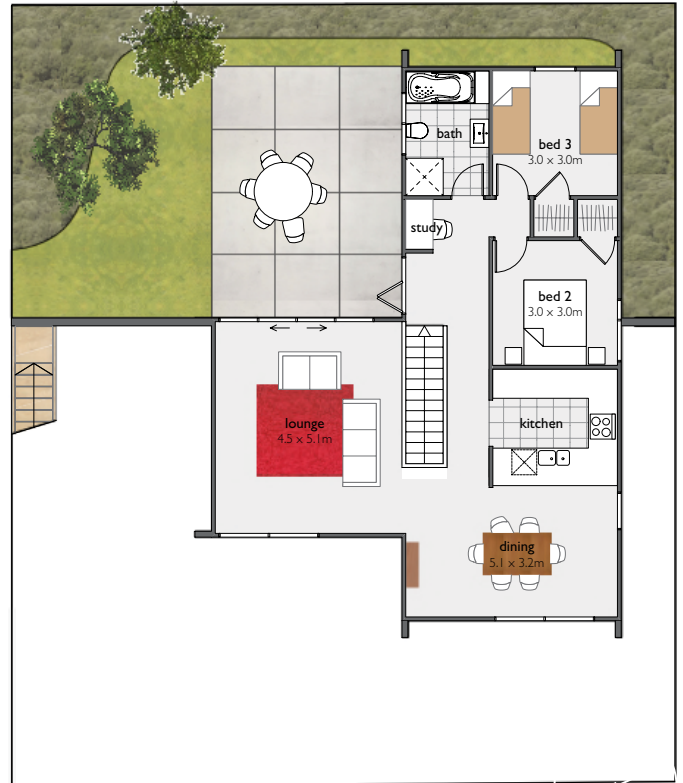
[www.woodridge.co.nz](http://www.woodridge.co.nz)

# LOT 521 | 54 TEA TREE LANE

## V GROUND FLOOR



## V FIRST FLOOR



### DIMENSIONS

- Ground floor area 57.5m<sup>2</sup>
- First floor area 91.6m<sup>2</sup>
- Total floor area 149.1m<sup>2</sup>
- 298m<sup>2</sup> section
- Licensed Building Practitioners
- As we have been building quality homes for more than 40 years, you have our security and experience on your side.

### FOR MORE INFO CONTACT

0800 WOODRIDGE

Leanne Wright  
mbl 021 72 82 85  
43 Woodridge Drive,  
Woodridge  
PO Box 26 017,  
Newlands,  
Wellington 6442  
[www.woodridge.co.nz](http://www.woodridge.co.nz)

*Refer to the latest Woodridge Developments new homes specifications for details*



[www.woodridge.co.nz](http://www.woodridge.co.nz)

**KITCHEN**

**Joinery**

Thermoformed Kitchens.

**Appliances**

Fisher & Paykel Oven, Gas Hob, Rangehood, & Dishdraw.  
Finished in EZKleen stainless steel.

**Accessories**

Paini Cox swan neck kitchen mixer, wastemaster.

**Splashback**

Glass with Resene metallic paint finish.

**Floor Coverings**

Ceramic tiles.

**BATHROOMS**

**Showers**

Clearlite.

**Bath**

Clearlite Gauguin.

**Basins**

Solo 600 single draw standard colour finish

**Toilets**

Envy.

**Tapware**

Paini Cox

**Mirror Cabinets**

Vista 600 Mirror Cabinet standard colour finish

**Floor Coverings**

Ceramic tiles.

**Exhaust Fans**

Ceiling mounted.

**HEATING & HOT WATER SYSTEM**

**Heating**

Fujitsu Compact Hi-Wall Premier ASTG18LVCA heat pump.

**Hot Water System**

Rinnai Infinity 26 gas system.

**ELECTRICAL & SECURITY**

**Electrical**

18 recessed incandescent down light, 12 surface mounted lights, 20 light switches. 22 double power outlets, 4 batteren fittings to garage, 3 exterior Prisma bulkhead lights, 2 exterior twin sensor lights, home fibre network communication switchboard, Cat 6 patch panel and Cat 6 cabling star wired to a triple outlet to the main router position and 2 double data outlets, 3 TV outlets, 2 towel rail power outlets. Connections for oven, cooktop, rangehood, dishwasher, fridge, hot water system, watermaster and garage door opener.

**Security**

Remote controlled security alarm system.



**WOODRIDGE**  
DEVELOPMENTS  
*above all*

FOR MORE INFO CONTACT

**0800 WOODRIDGE**

Leanne Wright      mbl 021 72 82 85

43 Woodridge Drive, Woodridge  
PO Box 26 017, Newlands, Wellington  
[www.woodridge.co.nz](http://www.woodridge.co.nz)

**INTERIOR**

**Insulation**

R2.2 rated to external walls and R3.2 rated to ceilings.

**Linings**

Plaster board throughout with Aquaboard to bathrooms.

**Trim**

60mm bevelled architraves with square stop trim to ceilings.

**Doors**

Flush interior doors with lever style hardware.

**Shelving**

Wardrobe World shelf and rod starter systems to wardrobes and linen cupboards.

**Floor Coverings**

Carpets to all living and bedroom area's. Ceramic tiles to entry, kitchen and bathrooms.

**Laundry Tub**

SuperTub ST7000.

**EXTERIOR**

**Roofing**

Colorsteel Corrugate.

**Spouting**

Colorsteel spouting and downpipes.

**Cladding**

Stained pine weatherboards and painted pine weatherboards.

**Joinery**

Double glazed domestic series aluminium joinery with clear glass. Single glazing to garage.

**Entry Door**

Aluminium entrance door with lever door lock.

**Garage Door**

Coloured aluminium sectional door with automatic opener.

**LANDSCAPING**

**Driveway**

Exposed aggregate or coloured imprinted concrete including patios and paths.

**Lawn**

Hydro mulched lawn to all flat areas.

**COLOUR SELECTION AVAILABLE**

Interior wall colours, floor tiles and carpet colours

*All colour and product selections are from Woodridge Developments' current range and are subject to change. Specific specifications for these properties are confirmed at the building proposal stage.*



**WOODRIDGE**  
**DEVELOPMENTS**  
*above all*

**FOR MORE INFO CONTACT**

**0800 WOODRIDGE**

Leanne Wright      mbl 021 72 82 85

43 Woodridge Drive, Woodridge  
 PO Box 26 017, Newlands, Wellington  
[www.woodridge.co.nz](http://www.woodridge.co.nz)

**WOODRIDGE DEVELOPMENT Show Homes**

---

Our current range of premium homes are designed by our designers and architects. If you are serious about owning one of these stunning, high spec homes then watch this space - they usually sell well before completion.

**GUARANTEES & Payment Plan**

---

**FIXED PRICE GUARANTEE.**

**SEVEN YEAR NEW HOME GUARANTEE.**

**DEPOSITS SAFE IN LAWYERS TRUST ACCOUNT.**

To secure the show home of your choice, a \$2,000 securing deposit is required.

From here we prepare an obligation free building proposal. This proposal covers your chosen home and land package in specific detail and includes schemed floor plans, street front elevations, site plan and a copy of title.

If after receiving the building proposal you decide not to proceed the entire \$2,000 deposit is refunded.

On acceptance of the building proposal a further deposit of \$5,000 is required. From here we organise the main building agreement, construction plans, specifications and obtain an independent valuation.

On signing and confirmation of the above documents a further 7.5% deposit is required.



**W O O D R I D G E**  
**D E V E L O P M E N T S**  
*above all*

**FOR MORE INFO CONTACT**

---

**0800 WOODRIDGE**

---

Leanne Wright      mbl 021 72 82 85

---

43 Woodridge Drive, Woodridge  
PO Box 26 017, Newlands, Wellington  
[www.woodridge.co.nz](http://www.woodridge.co.nz)