

LOT 512 - 7 | 25 RED BEECH AVENUE

**SOLD**



#### FEATURES

- Two bedrooms
- Master bedroom addressing courtyard
- Open kitchen addressing courtyard - breakfast bar & dining
- Separate lounge addressing courtyard
- Generous single garage with internal access
- Large patio/courtyard for outdoor living (very private)

*Refer to the latest Woodridge Developments new homes specifications for details*



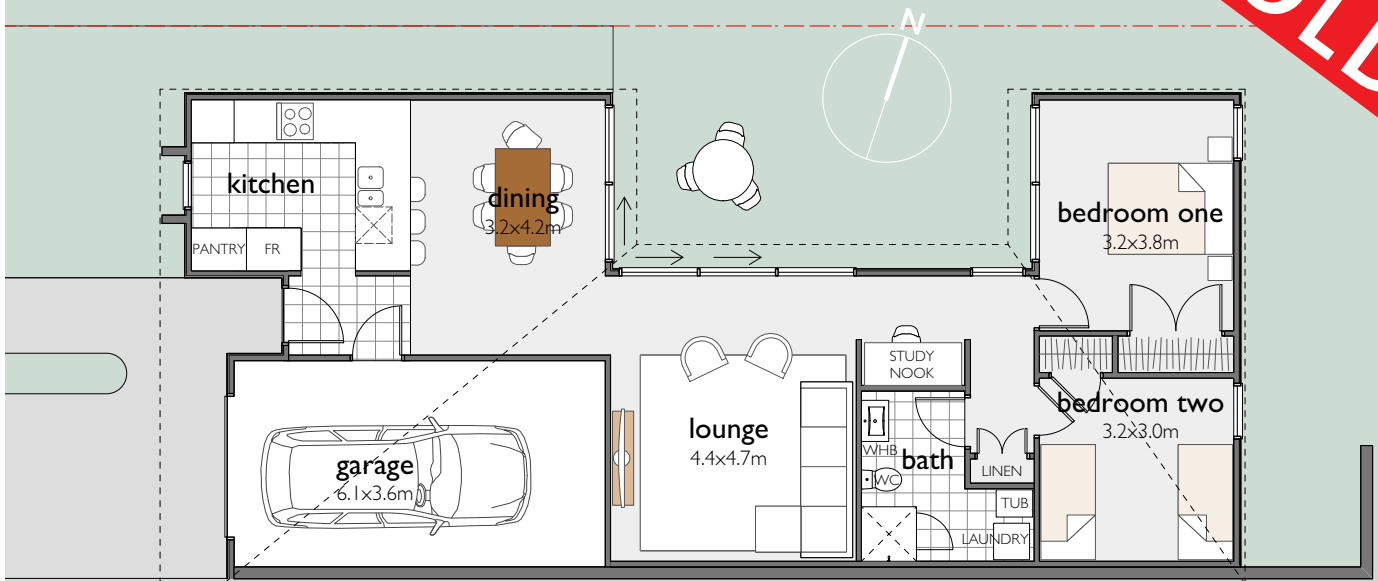
FOR MORE INFO CONTACT

**0800 WOODRIDGE**

**woodridgehomes.nz**

Leanne Wright | mbl 021 72 82 85  
43 Woodridge Drive, Woodridge  
PO Box 26 017, Newlands, Wellington 6442

**CREATIVE DESIGN · CONVENIENT LOCATION · QUALITY CONSTRUCTION**



FLOOR PLAN



SITE PLAN

**DIMENSIONS**

- Ground floor area 113.4m<sup>2</sup>
- 300m<sup>2</sup> section
- Section with timber fence and gate closing off courtyard from dining along to rear bank

- Licensed Building Practitioners
- As we have been building quality homes for more than 40 years, you have our security and experience on your side.

*Refer to the latest Woodridge Developments new homes specifications for details*



FOR MORE INFO CONTACT

**0800 WOODRIDGE**

**woodridgehomes.nz**

Leanne Wright | mbl 021 72 82 85  
43 Woodridge Drive, Woodridge  
PO Box 26 017, Newlands, Wellington 6442

**SOLD**

**KITCHEN**

**Joinery**

Thermoformed Kitchens.

**Appliances**

Fisher & Paykel Oven, Gas Hob, Rangehood, & Dishdraw. Finished in EZKleen stainless steel.

**Accessories**

Paini Cox swan neck kitchen mixer, wastemaster.

**Splashback**

Glass with Resene metallic paint finish.

**Floor Coverings**

Ceramic tiles.

**BATHROOM**

**Shower**

Clearlite.

**Basin**

Solo 600 single draw standard colour finish

**Toilet**

Brooklyn

**Tapware**

Paini Cox

**Mirror Cabinet**

Vista 600 Mirror Cabinet standard colour finish

**Floor Covering**

Ceramic tiles.

**Exhaust Fan**

Ceiling mounted.

**HEATING & HOT WATER SYSTEM**

**Heating**

Fujitsu Compact Hi-Wall Premier ASTG18LVCA heat pump.

**Hot Water System**

Rinnai Infinity Z6 gas system.

**ELECTRICAL & SECURITY**

**Electrical**

1 x exterior switch for Rinnai water heater. 1 x 150mm Inline exhaust fans ducted to exterior through soffit. Electrical connections to a single wall oven. Single outlets for gas hob, fridge, rangehood, waste disposal, dishwasher, microwave and garage door. Attic light switch and light inside manhole. Supply and install range-hood ducting and grill. Supply and install trade seals on the framing wrap for all penetrations. Supply and install a fiber ready communications board in the garage where all data cables and TV cables will run back to. Supply and install data outlets with one triple outlet for the wireless router. 1 x internal distribution switchboard complete with RCD's and MCB protection. 1 x meter box with internal opening in garage. 18 x double sockets. 16 x light switches with 2 x two way switching. 18 x recessed LED down lights. 3 x surface mounted batten holders. 2 x surface mounted batten holders in garage. 3 x exterior bulkhead lights. 2 x exterior twin sensor lights. 3 x telephone outlets. 1 x triple data outlet for wireless router. 2 x TV outlets, one being the main TV connection which includes 2 coaxial cables to exterior for satellite and UHF, TV connections and a mirror image to the remaining TV outlets. 1 x heated towel rail outlets only.

**Security System:**

Micron alarm system complete with control panel, key pad, internal and external siren, 4 PIR detectors, 1 smoke detector, panic switch in master bedroom and two key ring remotes.



FOR MORE INFO CONTACT

0800 WOODRIDGE

woodridgehomes.nz

Leanne Wright | mbl 021 72 82 85  
43 Woodridge Drive, Woodridge  
PO Box 26 017, Newlands, Wellington 6442

**SOLD**

**INTERIOR**

**Insulation**

R2.2 rated to external walls and R3.2 rated to ceilings.

**Linings**

Plaster board throughout with Aquaboard to bathrooms.

**Trim**

60mm bevelled architraves with square stop trim to ceilings.

**Doors**

Flush interior doors with lever style hardware.

**Shelving**

Wardrobe World shelf and rod starter systems to wardrobes and linen cupboards.

**Floor Coverings**

Carpets to all living and bedroom area's. Ceramic tiles to entry, kitchen and bathrooms.

**Laundry Tub**

Slimline tub.

**EXTERIOR**

**Roofing**

Colorsteel MC700.

**Spouting**

Colorsteel spouting and downpipes.

**Cladding**

Painted Hardieflex panels with battens.

**Joinery**

Double glazed domestic series aluminium joinery with clear glass. Single glazing to garage.

**Entry Door**

Aluminium entrance door with lever door lock.

**Garage Door**

Coloured aluminium sectional door with automatic opener.

**LANDSCAPING**

**Driveway**

Exposed aggregate or coloured imprinted concrete including patios and paths.

**Lawn**

Hydro mulched lawn to all flat areas.

**COLOUR SELECTION AVAILABLE**

Interior wall colours, floor tiles and carpet colours

*All colour and product selections are from Woodridge Developments' current range and are subject to change. Specific specifications for these properties are confirmed at the building proposal stage.*



**FOR MORE INFO CONTACT**

**0800 WOODRIDGE**

**woodridgehomes.nz**

Leanne Wright | mbl 021 72 82 85

43 Woodridge Drive, Woodridge

PO Box 26 017, Newlands, Wellington 6442

## WOODRIDGE DEVELOPMENT Show Homes

---

Our current range of premium homes are designed by our designers and architects. If you are serious about owning one of these stunning, high spec homes then watch this space - they usually sell well before completion.

## GUARANTEES & Payment Plan

---

**FIXED PRICE GUARANTEE.**

**TEN YEAR NEW HOME GUARANTEE.**

**DEPOSITS SAFE IN LAWYERS TRUST ACCOUNT.**

To secure the home of your choice, a \$2,000 securing deposit is required.

From here we prepare an obligation free building proposal. This proposal covers your chosen home and land package in specific detail and includes schemed floor plans, street front elevations, site plan and a copy of title if available.

If after receiving the building proposal you decide not to proceed the entire \$2,000 deposit is refunded.

On acceptance of the building proposal a further deposit of \$5,000 is required. From here we organise the main building agreement, construction plans, specifications and obtain an independent valuation.

On signing and confirmation of the above documents a further 7.5% deposit is required.

*Refer to the latest Woodridge Developments new homes specifications for details*



FOR MORE INFO CONTACT

**0800 WOODRIDGE**

**[woodridgehomes.nz](http://woodridgehomes.nz)**

Leanne Wright | mbl 021 72 82 85

43 Woodridge Drive, Woodridge

PO Box 26 017, Newlands, Wellington 6442